

Gathered Rehearsal Cape

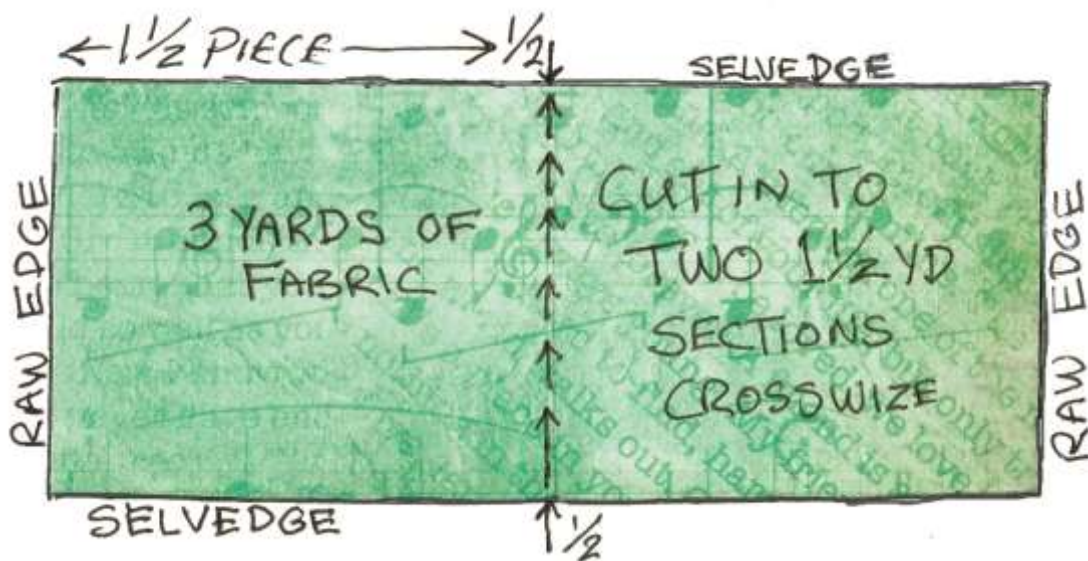
by Tara Maginnis, Diablo Valley College

You need:

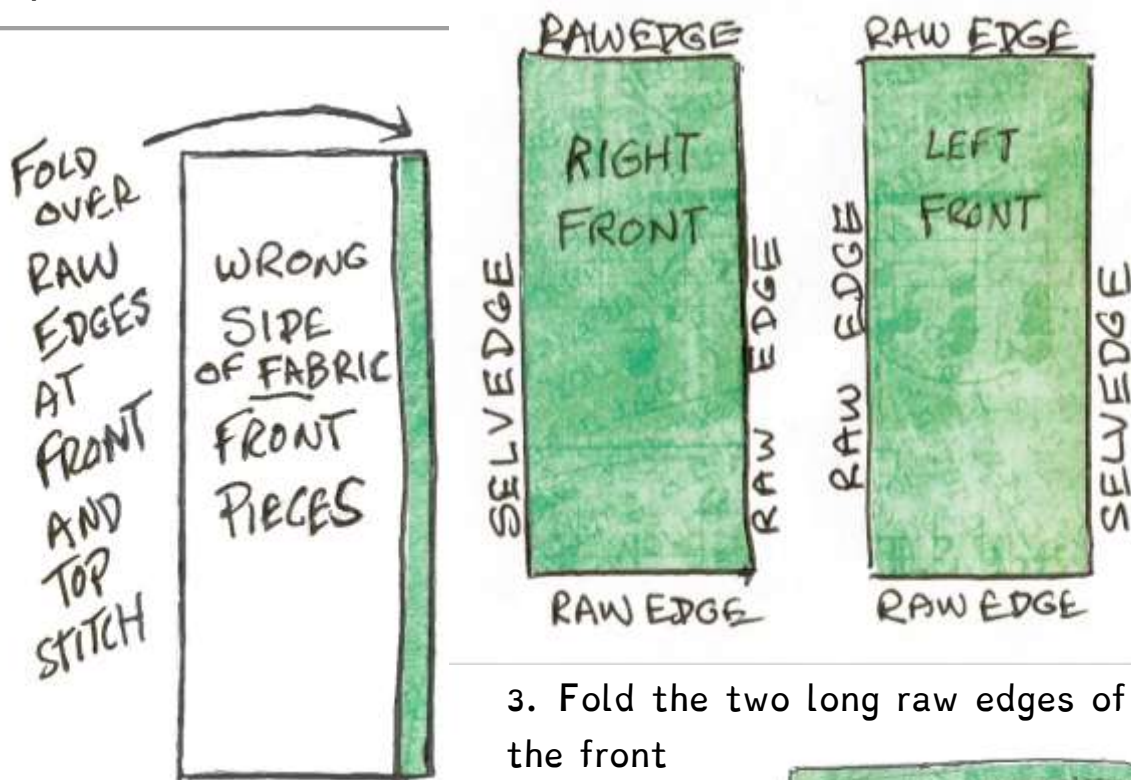
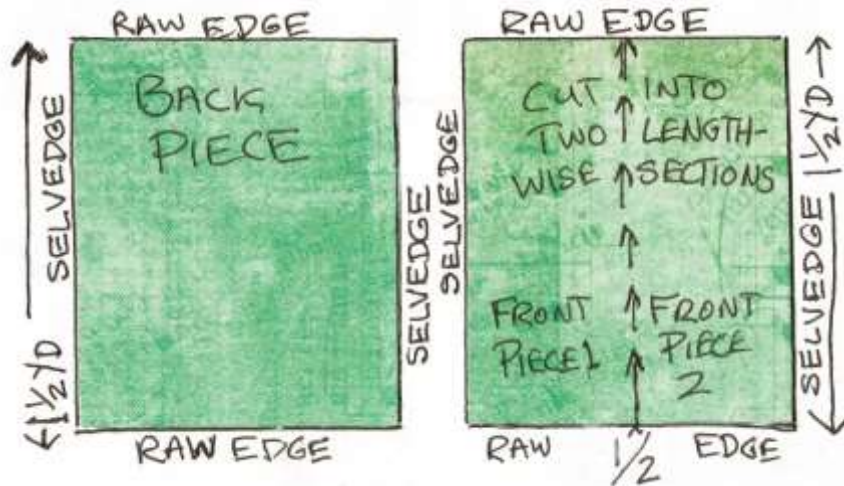
- 3 yards of cotton fabric 36" wide or more
- A pencil or chalk
- 1/4 yard of 3/4" elastic
- 2 large safety pins
- A needle and thread or Thread and Sewing Machine
- 1 & 1/3 yds (4 feet) of 3/4" - 1 & 1/4" wide ribbon
- Scissors
- Tape Measure
- Pins



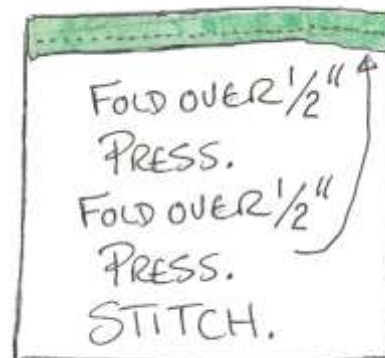
1. Take your 3 yards of fabric and cut crosswise into two 1 & 1/2 yard pieces



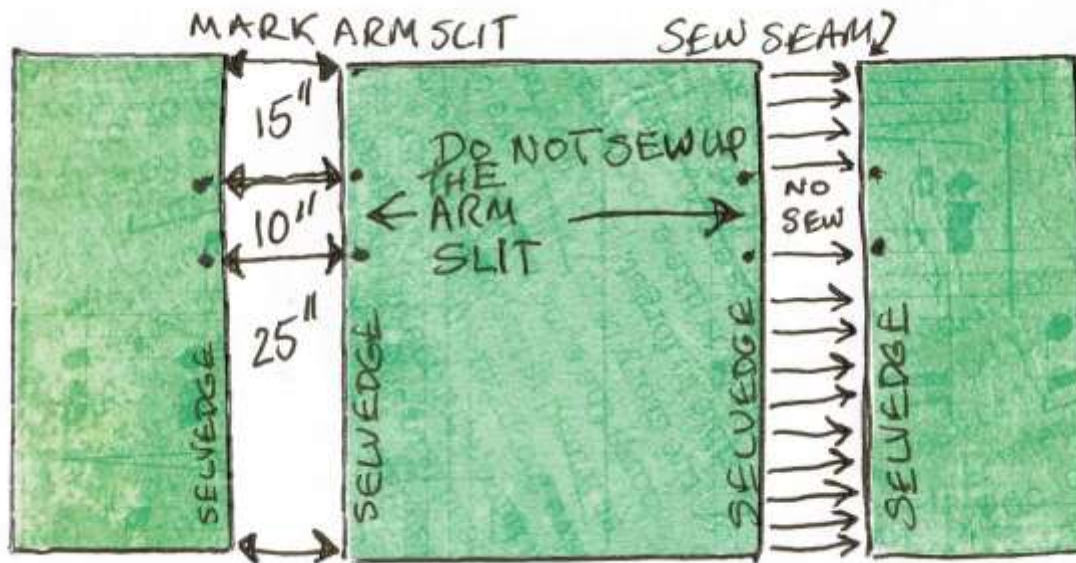
2. Cut one of these two sections of fabric in half, lengthwise making the two front pieces.



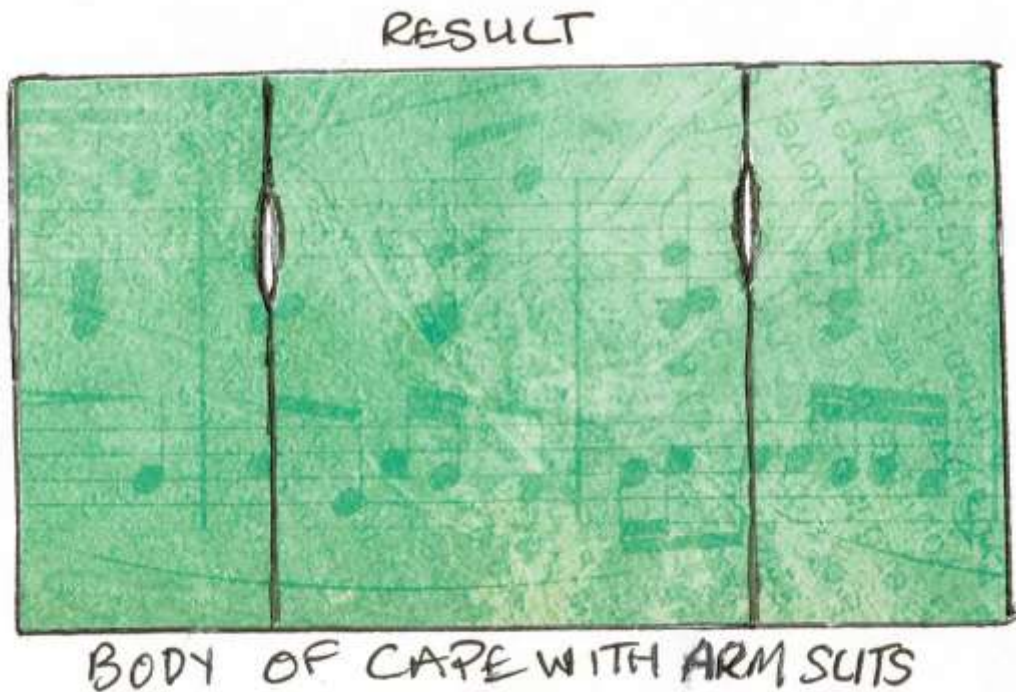
3. Fold the two long raw edges of the front pieces over 1/2" from the right side of the fabric to the back, and press flat. Fold over another 1/2" and press. Top stitch to finish the edge and hold it in place. Press again.



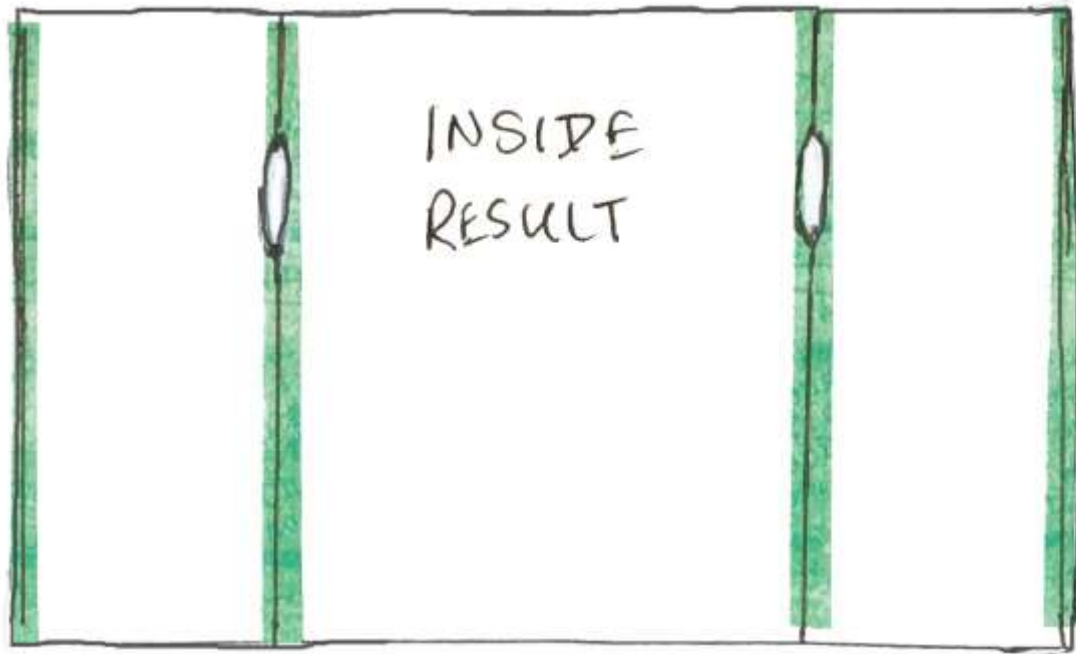
4. Measure down the side seam/selvage edges 15" and make a mark to indicate the top of the arm slits. Then measure down another 10" to mark the bottom of the arm slits.



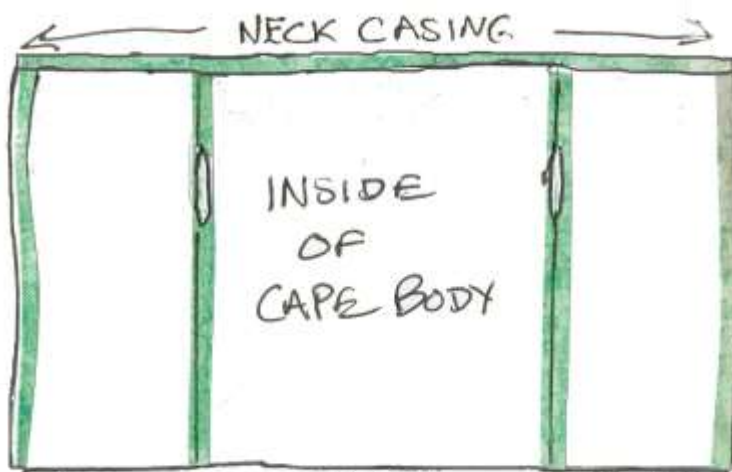
5. Pin the right sides of the side seam/selvage edges of the fronts and back together as shown.



6. Sew the right sides of the side seams together with a $\frac{5}{8}$ " seam allowance. Leaving the arm slit area open. Press open the seams so they lie flat.

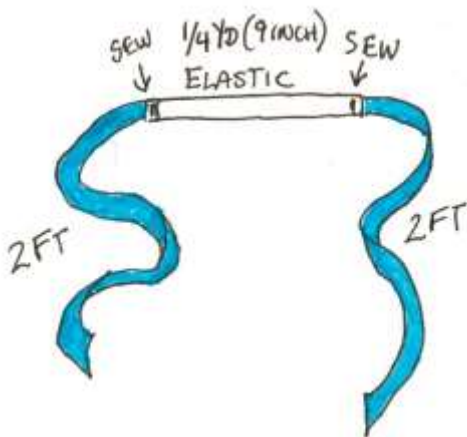
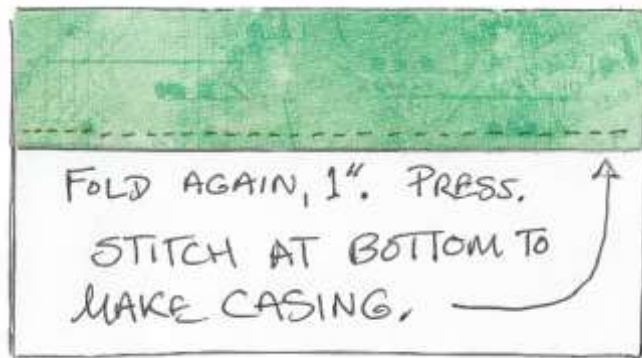


7. Fold raw right side top edge of the cape fabric over $\frac{1}{2}$ " and press.



8. Fold over again, 1" to form a casing [Long tube of fabric to run elastic and ribbon through] and press. Pin flat.

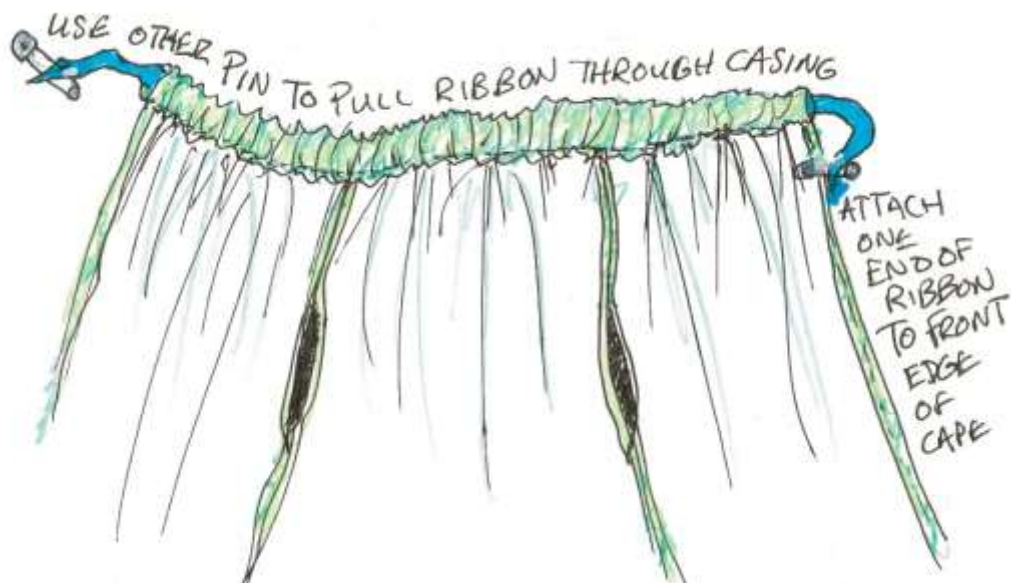
9. Sew the casing along the full edge of the bottom fold as shown. Press flat again.



10. Cut the ribbon into two 2 ft pieces.

11. Sew the two pieces of the ribbon to the 1/4 yard [9 inches] of elastic.

12. Attach the two safety pins to the two far ends of ribbon. Fasten one pin to one side of the cape front and push the other end through the casing at the top of the cape till you have ribbon coming out at both sides of the tube.



13. Remove the safety pins and cinch up the ribbon to exit either end. Get the center of the elastic to stick in the center of the neckband tube.

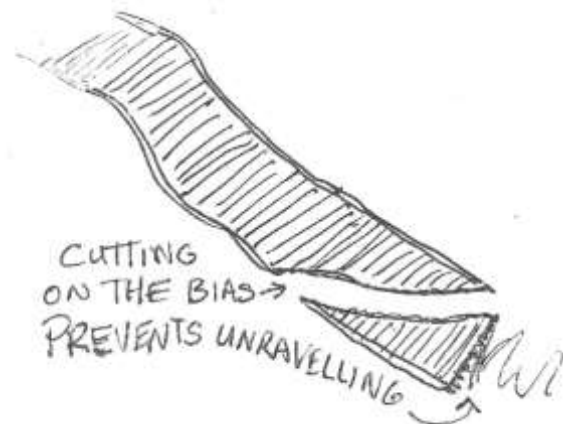


14. Try it on by tying into bow. Adjust until comfortable and safety pin the ribbons to either side of the front neck opening into a place that they can stay permanently.

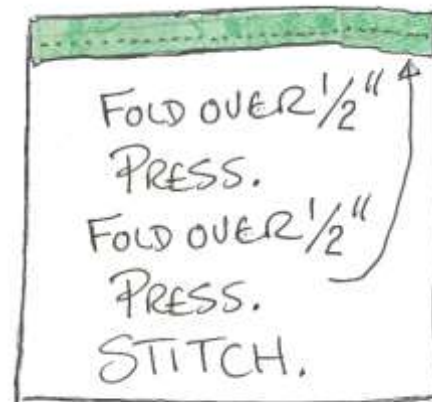
15. Untie the bow and take the cape off. Sew the ribbons in place as pinned by hand or machine.

16. Cut the ends of the ribbon at a sharp pointed angle to reduce unraveling. If you have clear nail polish, apply to the cut for added stability.

17. Try it on again and decide if you wish to shorten the cape based on your height.



18. If you do not, simply fold and stitch like you did on the front edge openings by folding over 1/2", press, fold another 1/2", press and top stitch.



19. If you do want to shorten the cape, cut it 1" longer than you wish your finished hem.



20. Fold and stitch like you did on the front edge openings by folding over 1/2", press, fold another 1/2", press and top stitch.

And you have a cape!

My class video tutorial for this project can be found on my YouTube channel <https://www.youtube.com/user/CostumersManifesto/videos> or my web site <https://Taramaginnis.com> where you may also download this PDF for your class!

