

# Making Portfolio Worthy Makeup Shots in Minutes with Your Cell Phone in a Badly Lit Basement



Rule # 1: Get in close, you are photographing the makeup after all



# Making Portfolio Worthy Makeup Shots in Minutes with Your Cell Phone in a Badly Lit Basement

- Framing the Face
- Lighting
- Camera Angle
- Posing
- Software





# Framing the face

- Ears or necks that don't match, incongruous modern clothing, hair or clothes that clash, all don't help the look of the makeup
- Anything at all that color coordinates and/or blocks out these distractions is an improvement
- Even a plain black t-shirt can work in a pinch for almost all stylized makeup by pulling the face through the neck-hole sideways and massing the body of the shirt around the face like a wimple like frame
- Background distraction can also upstage the face, so look for blank walls, especially gray cement walls that help your camera to color-correct











Mostly  
monochrome  
makeup nearly  
always looks  
best with a  
black  
background of  
some sort



# Tutu on the head





Bathrobe







You can improve the shot with any random stuff that matches the makeup that can be quickly pinned or tucked to form a frame













Wig + Tutu + \$1 Seasonal  
Headband



"Peasant"  
shirt made  
into a  
Wimple



When the light  
photographs color  
slightly "off" of the  
true color, it is NOT  
cheating to fix it to  
look like it does to  
the eye->







# Tutu and Halloween twiggy garland











The Kitchen Sink: As we move into the Fantasy Mythic Creature Finals the makeup is often more complex and abstract. The main rule for quickly framing these faces is to run to the costume studio and grab *anything at all* that has similar colors and textures to the makeup, and quickly swath a face with a frame of it.

You see here a pair of foam monster claw gloves, a hat with feathers, a net veil and some gold mesh on a roll simply tucked around the face.







Headpieces need not be stable. These collars are kept on the tops of the models heads by having them lean against the wall they are posing against







These weeping angel wings were made by two students holding up this big swath of wrinkled yardage from a fabric bin. Now, how impressive would this makeup look without this?

Quick  
Medieval  
for  
Angry/Sad  
old Age  
Makeup



Bits of  
fabric and  
old crowns  
from RIII  
made with a  
Burger King  
base



Saved scrap  
of a sweater  
and a tubed  
cowl



Two aprons  
wrapped  
round the  
head



Quick  
Medieval for  
Angry/Sad  
old Age  
Makeup



Fabric  
scrap  
round  
neck, RIII  
crown



Mad Queen  
Margaret wig,  
neck scarf, plastic  
crown



Mad  
Queen  
Margaret  
wig,  
fabric  
scrap,  
plastic  
sword



Fabric,  
tweed jacket  
on head,  
woolly scarf



Happy  
old age







A strip of fur or feathers can hide human neck or ears on animal makeup to make the face paint stand out, even if it is the same stupid scrap of fur from one photo to the next







A Feather Boa













# Lighting:

- Look around your available space for different types of light: Incandescent (yellow-orange), Fluorescent (greenish), Daylight (blueish). Put the makeup in the light that flatters it.
- Try to find a place with the maximum broadly diffused light, and a couple of places with strong directional light.
- Most 2-D makeup looks best under diffused light. If there is no place with diffused light, make a diffuser, or grab a piece of white poster board to serve as a bounce-diffuser.
- 3-D makeup sometimes needs directional light to show off. If there is no place with a strong directional light, buy a LED flashlight.

# Lighting: Why you want to take your photos outside the makeup room

Because the lights and mirrors bounce bits of super bright back light, the important parts are always under exposed.



Distracting junk in the room upstages the makeup



And most of all...







Even with lots  
of lightening  
and contrast  
they still look  
awful



If you must photograph in the makeup room, get behind the lights, and have the model lean into them



⌘ Normal shot in a makeup room

Shot taken as shown below, where the camera is pointing away from the lights and the face is close to them à

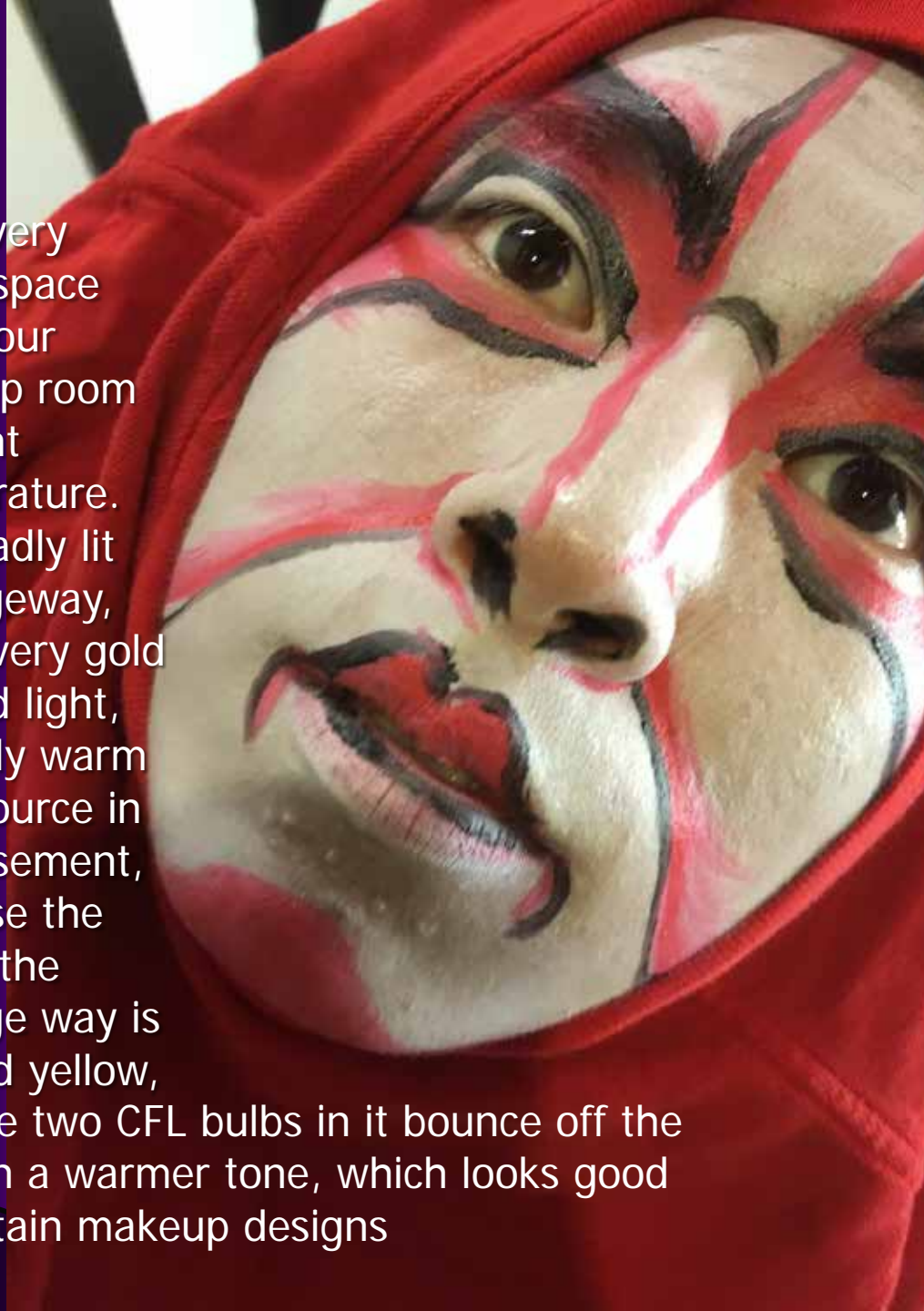








Test every weird space near your makeup room for light temperature. This badly lit passageway, has a very gold colored light, the only warm light source in my basement, because the top of the passage way is painted yellow, and the two CFL bulbs in it bounce off the walls in a warmer tone, which looks good on certain makeup designs





Photographing near an outside door gives you bluish **daylight** which may help the look of certain makeup colors. However always try to get daylight in a **diffused** form, either from overcast sky, shaded indirect light, or by holding a diffuser (nylon laundry hamper) over your shot. This shot was taken with overcast, yet it is perilously close to being too contrast-y.





You can see the difference in diffusion between the shot  $\beta$  under **tube lights** in the hall and **daylight** at the outside hall door à

Tube lights tend to give a little bit of yellow-gray-green cast which is good for the green, but bad for the lilac blue on the lips.







Even fairly simple makeup like this one above can look amazing if you wrap it in black, find a place where there is a single light bulb, and have the wearer emote up towards the light

Yep, all I did was have him zip up his hoody, stand under the lightbulb, while I stood on a chair to get above him and shot down







# Camera Angle:

- Cell Phone Cameras are Great Fish Eye Cameras if you get really close. A Fish Eye Camera enlarges whatever is closest to the lens. This lets you emphasize whatever features flatter the makeup and or the wearer.
- Down angles in  $\frac{3}{4}$  profile tend to flatter most people and feminize faces.
- Up angles make jaws look bigger and more masculine.
- Side angles with contrast show wax noses better.
- To show mask-like makeup to advantage, stand further away and zoom in to widen & flatten.
- Cat makeup looks best down from above front, with a bit of the forehead cut off to turn the face into a triangle.
- To photograph a neck makeup without fattening it have the model stretch the neck forward like a turtle.
- Take deer in headlight photos for making student Face Outline Sheet
- You can get some flattering "down" angles by posing people on the floor.....

Cell Phone Cameras are Great Fish Eye Cameras if you get really close.  
A Fish Eye Camera enlarges whatever is closest to the lens. This lets you emphasize whatever features flatter the makeup and or the wearer:



<Angled  
Down from  
top makes  
a huge  
forehead  
and tiny  
chin



^ Straight on and  
centered, makes  
nose slightly  
larger, and sides  
of face recede  
slightly

Close to  
one eye  
enlarges  
the eye  
and  
cheekbone  
>



<Angled  
up from  
bottom  
makes a  
tiny  
forehead  
and huge  
chin

>  
Close to  
the nose  
enlarges  
the nose







Drag Glamour:  
Shoot from above, close to one eye (3/4 profile) to make eyes bigger, and chin smaller, have model open eyes as big as possible, by looking up if needed, cover Adam's apple with boa.







I signal to my students where I want them to look by wiggling my fingers to where their eyes go before the shot





This works for  
women too.







The same tricks work to improve the look of "corrective" makeup for 95% of humans. The 5% that are the exception are men with no chin.







For Beards on women, shoot up. It shows the beard and gives women smaller eyes and a more masculine jaw

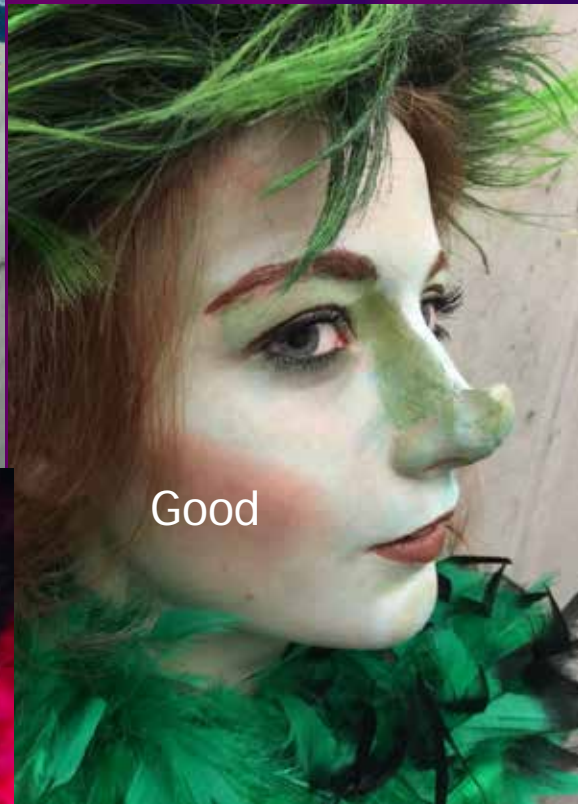


Noses: Side Views and  $\frac{3}{4}$  views *with contrast* show off wax noses better than front shots.





More Contrast is better than less



Photos taken up close make the face look more oval, and make the nose more prominent. When photographing traditional Asian makeup on non Asian faces, it emphasizes the Western look of the faces.



Photos taken from a greater distance and zoomed, make the face look rounder and the features look flatter. The sides of the makeup design also show up more.





Photos taken up close make the face look more oval, and make the nose more prominent. When photographing traditional Asian makeup on non Asian faces, it emphasizes the Western look of the faces.



Photos taken from a greater distance and zoomed, make the face look rounder and the features look flatter. The sides of the makeup design also show up more.



<-straight on shot->

## The Cat Trick:

Get close, Tilt down from above, chop out the top of the forehead to make the skull look more triangular, with larger eyes and smaller chin, like a cat.



<-Cat Trick shot->







<-straight on shot->

## The Cat Trick:

Get close, Tilt down from above, chop out the top of the forehead to make the skull look more triangular, with larger eyes and smaller chin, like a cat.



<-Cat Trick shot->



<-straight on shot->

## The Cat Trick:

Get close, Tilt down from above, chop out the top of the forehead to make the skull look more triangular, with larger eyes and smaller chin, like a cat.



<-Cat Trick shot->





If the neck is cool, feature it



Have the wearer pull his/her chin forward so it stays looking thin

Face outline sheets help students do better renderings for themselves. To make one of these, shoot the student straight on while he/she has the mouth at rest, and eyes open fully in an unflattering "deer in headlights" look.



3 Monochrome it and High contrast it into a B&W 8.5x11 print. You then tape it backwards to a window, and draw a simple outline on the white side that looks like a backwards outline of the face (The way the student sees him/her self in the mirror). Then make copies, preferably onto cardstock.





# Poses

- Poses to create context
- Poses for showing design
- Poses to improve background
- Poses to improve shooting angle
- Mirror shots



## Poses for Context:

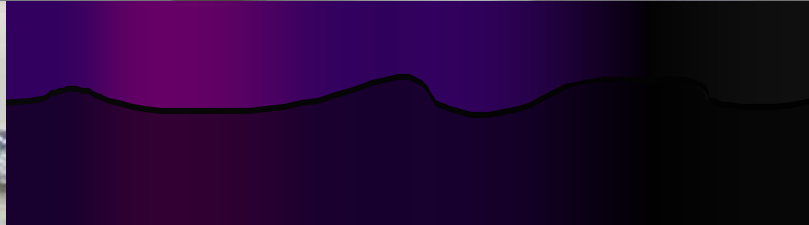
















# Poses for Showing Design:

If a student has a good rendering get several shots with the makeup and rendering together. Usually, you'll want to photograph the rendering nearly straight on and the face next to it in  $\frac{3}{4}$  profile.





Poses to Improve  
Background:  
Mermaids on the floor



























Shooting in the ivy







- Only do this in full shade or on very diffused, overcast day or the shot will fail
- Don't do after rainy night
- Always offer the model refusal of sticking their head in with the dirt and bugs. Uncomfortable models give you poor shots
- Most folks will say yes, but feel really adventurous while doing this, and it tends to make for fun facial expressions









# Mirror Shots





# Mirror Shots









# Mirror Shots





# Mirror Shots







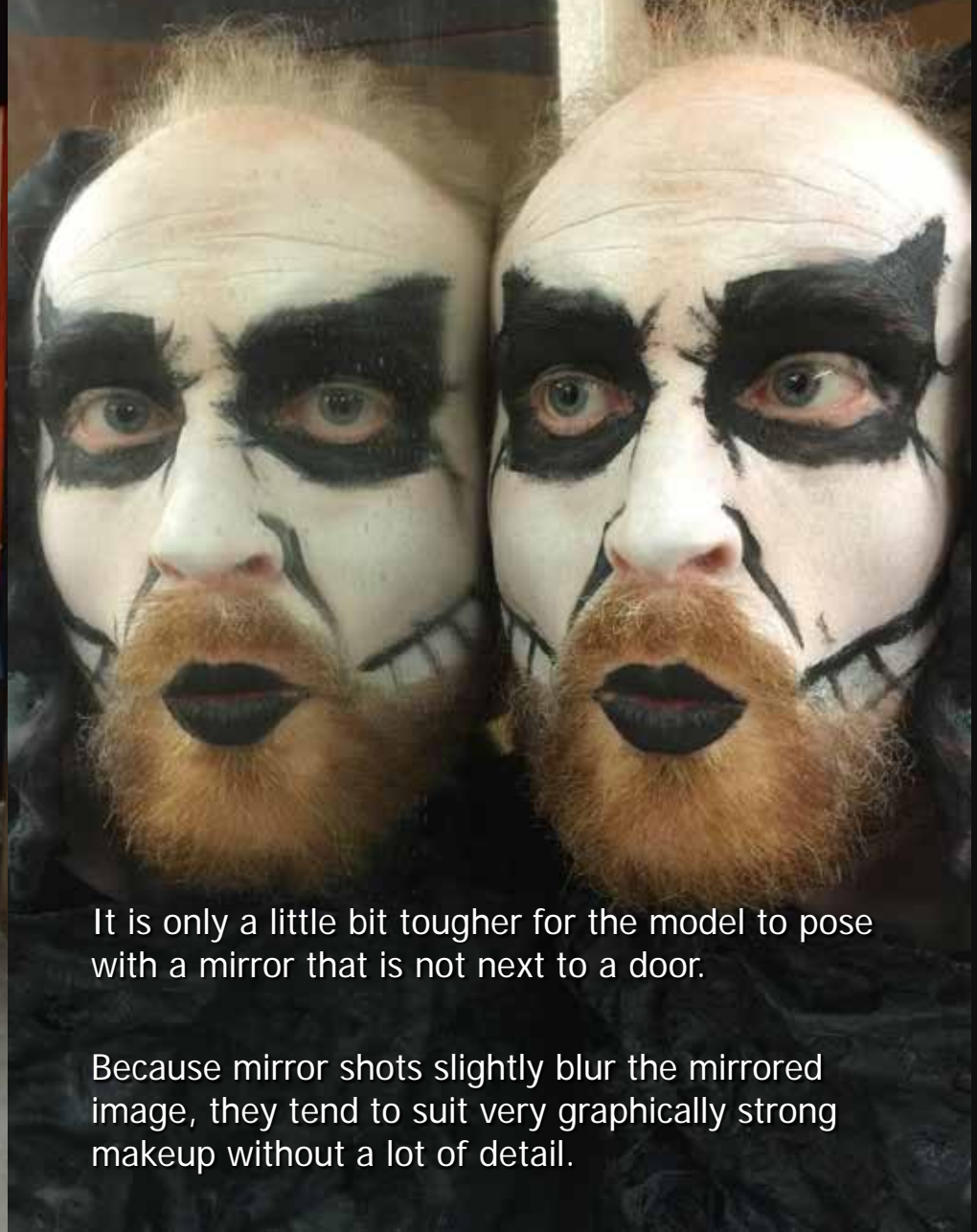












It is only a little bit tougher for the model to pose with a mirror that is not next to a door.

Because mirror shots slightly blur the mirrored image, they tend to suit very graphically strong makeup without a lot of detail.

You can make the mirrored image look more “real” by having the model look at the lens through the mirror.



# Software

moreBeaute2



Photoshop  
Express



Photo Lab





## moreBeaute2

The app you want for making  
your photo shy relatives happy  
to see your pictures of them.

It automatically blurs away  
zits, and lightens mid-tones to  
fix bad lighting, so you look  
like a cover photo.





# Photoshop Express



Original is above, fixed or fiddled with in several of the regular preset adjustments on the app. Photoshop has a LOT of good adjustments in the basic app, and even more in the premium add ins.



# Photoshop Express



Original







Photo Lab:  
has a feature  
that puts  
decorative  
swirly stuff  
around a clear  
center







Photo Lab:

This amps  
up existing  
decorative  
edges  
around a  
makeup







Photo Lab



Photo Lab:

It also can deal  
with photos  
that have  
distracting  
elements like  
ears and necks  
without makeup





Photo Lab:

It also can deal with photos that have distracting elements like ears and necks without makeup



The edge choices are pretty random, so they only suit some makeup, but are great when they do.

