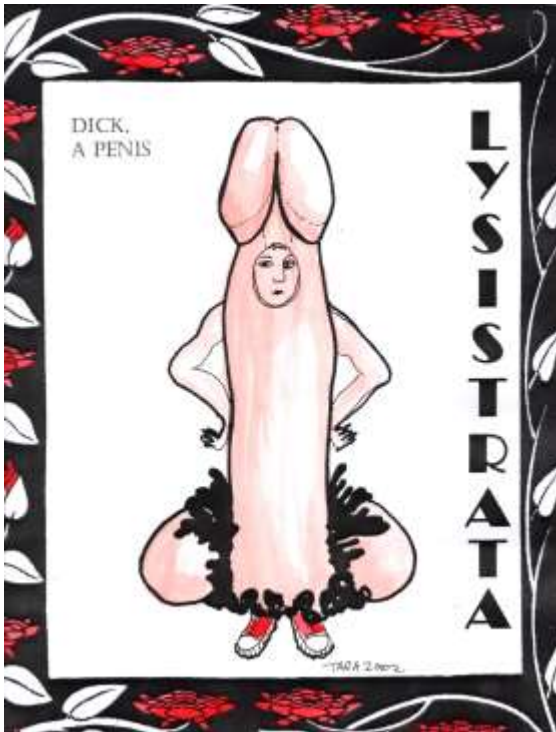
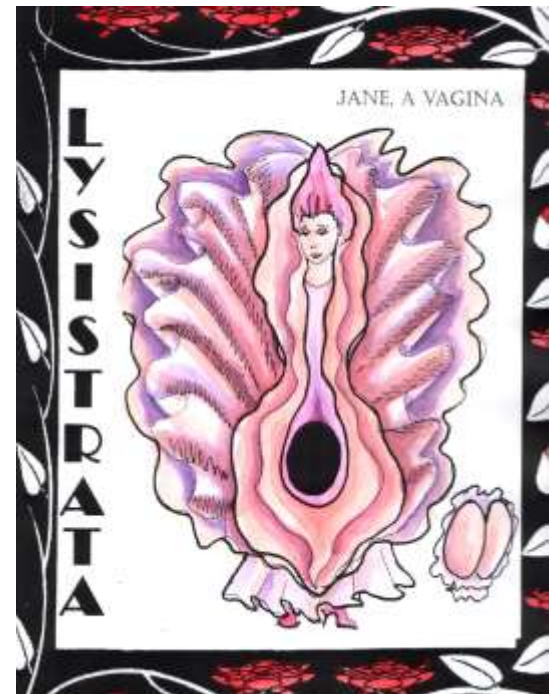


Fun With Dick and Jane; The Lysistrata Costume Controversy:



Costume renderings are rarely controversial. A notable exception was in 2002 when the costume renderings for Lysistrata were put on display in our lobby at UAF as usual, about a month before opening the show. The male costumes included traditional extra-large dangling phalli, and the women's costumes were scanty (although not so scant as the 1896 Aubrey Beardsley illustrations upon which they are based). However, the costumes for the two characters that were added by director Thomas Riccio, team "mascots" of a man dressed as a penis, and a woman dressed as a vagina, for each of the two choruses, were the ones that seemed to have caught everyone's imagination.

Before designing these, I researched examples of these two organs online, and found most penis and vagina costumes to look rather ugly and awkward. I decided to ask myself "how would these costumes look if they were designed to be Disney mascots, or if Jim Henson made them for a Sesame Street special



on where babies came from?" Dick (as we dubbed the penis) was smoothed out to the basics in a cheery shade of pink, and Jane (as we came to call the vagina) was stylized to look more like a Georgia O'Keefe flower than an anatomy lesson. I tried to keep them looking like something my mom (a retired elementary school principal) would think

was cute and not gross. I had made far, far nastier looking costume renderings for Jezebel and The Beast for the previous year's political satire, Yahoo Nation (2001) and nobody seemed to have even noticed them when they were in the Great Hall. So no one in the Theatre, least of all me, was expecting anyone would blink at the squeaky-cute Dick and Jane images. Indeed, when the first letter objecting to them appeared in the student paper the Sun Star, accusing the Theatre Dept. of being filled with "degenerates", a few others, and I, assumed that the letter was a hoax by one of our own students, intended as a joke.

Lysistrata opens Friday 15th

YOU CAN COME AND
SEE IT, OR SPEND
THE REST OF YOUR
COLLEGE CAREER
WONDERING WHAT
ALL THE FUSS WAS
ABOUT.

Performances November 15, 16, 22, & 23 at 8:15pm and Sunday the 24 at 2:00pm in the Lee H. Salisbury Theatre
STUDENT TICKETS ARE ONLY \$5 This Show Rated "R"

Lysistrata
THE BEST
COMBINATION OF
FEMINISTIC SEX
FARCE WITH ANTI-
WAR DRAMA SINCE
413 BC!

Performances November 15, 16, 22, & 23 at 8:15pm and Sunday the 24 at 2:00pm in the Lee H. Salisbury Theatre
STUDENT TICKETS ARE ONLY \$5
This Show Rated "R"

After the Theatre Department began to get harassing calls, however, we worked out that there were folks out there who were *actually serious* about this, and who were employing various scare tactics, like threats to the CLA Dean's office demanding that CLA censor the play and the lobby display, ripping down posters, crushing table tents, etc. For the most part, those of us in the Theatre Department were not too bothered by all this, because we were amused at the whole "degenerate" label, and knew that when people foolishly attack a stage production in this fashion, all they do is provide enormous amounts of free publicity, which

means more box office receipts to pay our student assistants. To be funny, we stuck up a few paper tags that said, "CENSORED" over some of the "naughty bits" in the display case, and would have likely left it at that.

However, when a second set of our table tents and posters were vandalized and tossed out of Wood Center within 12 hours of their being put up, I actually got angry. In a fury that night I designed 36 bright pink text-only posters, some of which you can see here. They were all designed with a view towards making our free student preview (and hopefully the show as well) the best-attended campus event that season by courting the controversy that had been invented by the would-be-censors. We then dressed our Dick and Jane in their costumes and visited Wood Center to hand out fliers with me and Lorraine Pettit (my costume shop manager, who incidentally constructed Dick and Jane) as body guards for the actors and their outfits. The costumes and fliers were such a hit that preview was packed, and the show was the best-attended non-musical show in our history. Which should demonstrate to would-be

censors, that when you declare a stage show and its producers "degenerate", you are handing that show's producers more free publicity than they could ever hope to buy.

Since Lysistrata closed, Dick and Jane have had a life after the show for which they were made. Jane went to the annual wearable art competition held in the capital, Juneau, and won second place. She has also appeared for the fundraiser show The Vagina Monologues when done by the UAF Women's Center and out at a community center in the Aleutians. Renderings and photos of Dick were included in a juried art show in Juneau as well. Both Dick and Jane are the "Bride and Groom" grand finale of our own bi-annual wearable art fashion show fund raiser. Their pictures on costumes.org have inspired numerous persons to call or write UAF asking how to make them or if we will sell them (we won't) which is why I have detailed how-to instructions for making them here. ✂

Lorraine Pettit, Theatre UAF costume shop manager, showing off Jane's costume while she is making it. →



Lysistrata opens Friday 15th

WHAT THE HECK IS
WRONG WITH A TAP
DANCING VAGINA?

DON'T YOU WISH
YOURS COULD?

Performances November 15, 16, 22, & 23 at 8:15pm and
Sunday the 24 at 2:00pm in the Lee H. Salisbury Theatre
STUDENT TICKETS ARE ONLY \$5
This Show Rated "R"

Lysistrata opens Friday 15th


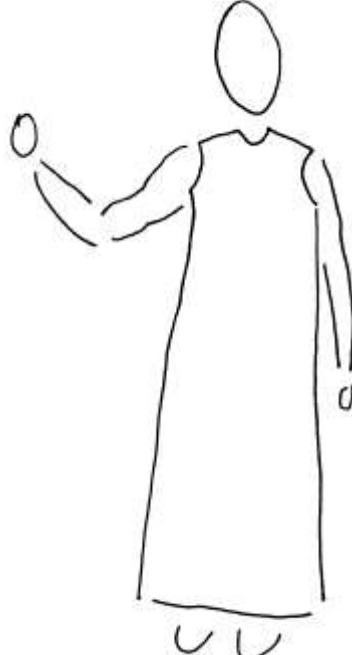
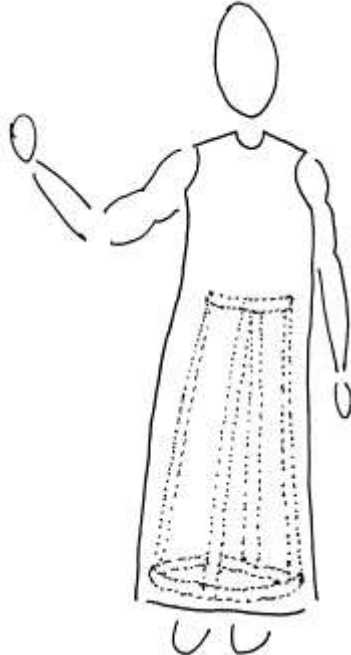
DO YOU KNOW THAT
LYSISTRATA WAS WRITTEN AS
PART OF THE RELIGIOUS
FESTIVAL OF THE GOD OF WINE,
THEATRE, AND ORGASM?

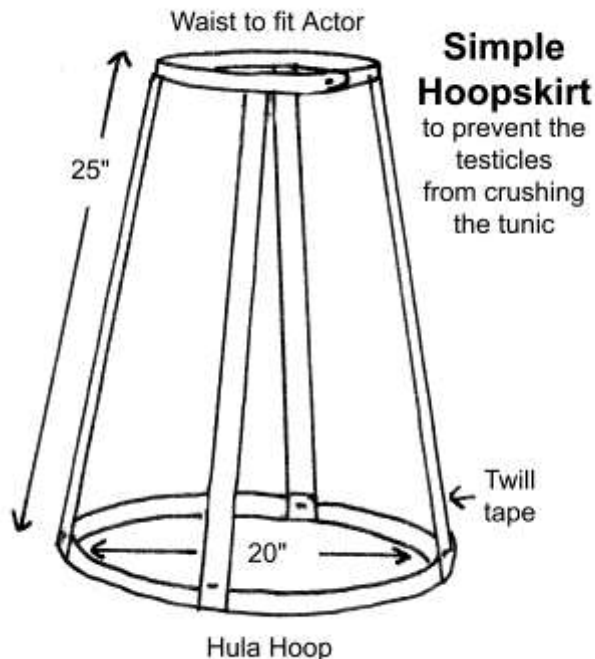
NOW *THAT* SOUNDS LIKE GOOD
OLD TIME RELIGION!

Performances November 15, 16, 22, & 23 at 8:15pm
and Sunday the 24 at 2:00pm in the Lee H. Salisbury
Theatre
STUDENT TICKETS ARE ONLY \$5!!!!!!!

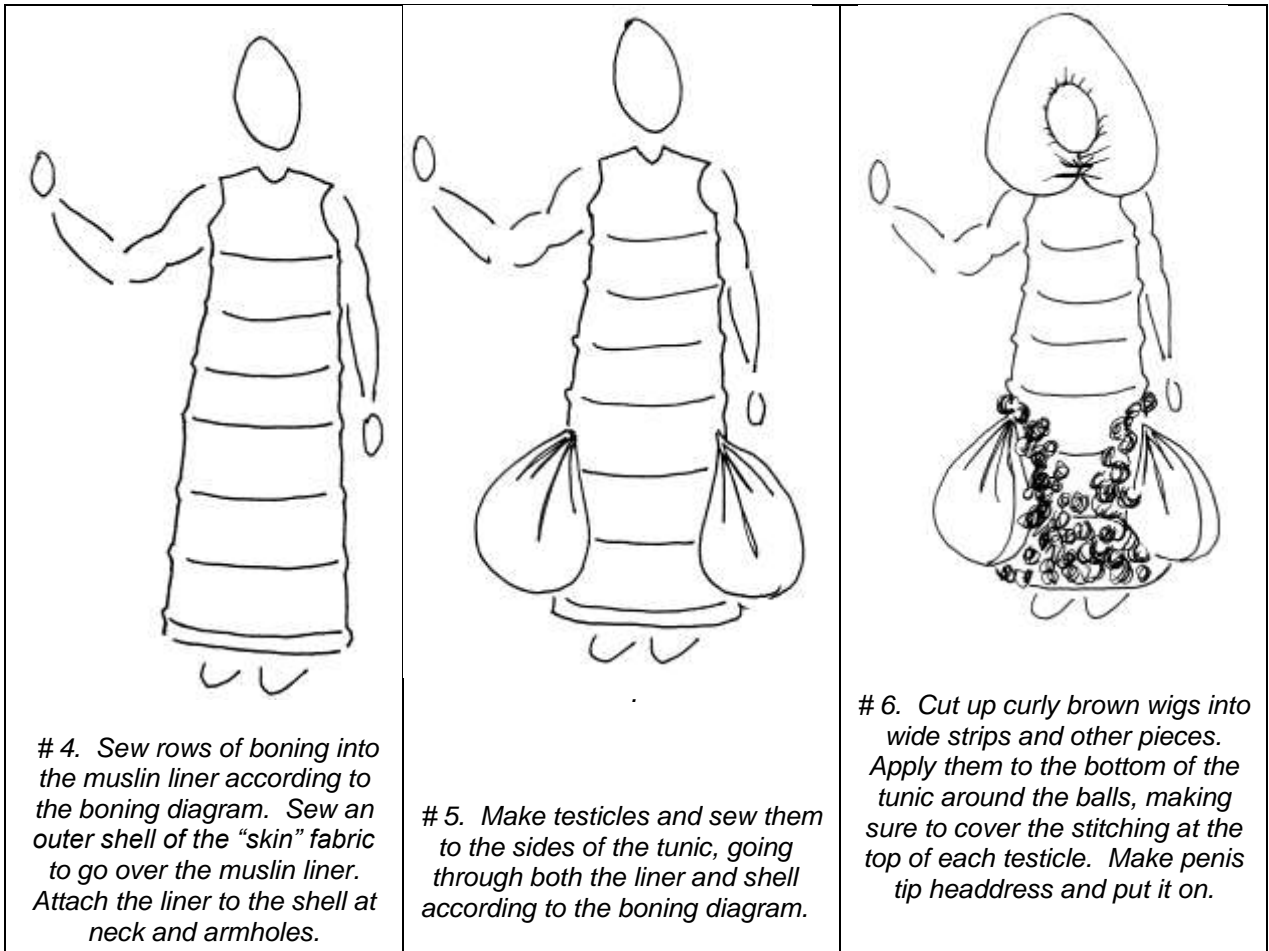
This Show Rated "R"

How to Make Yourself a Six Foot Penis

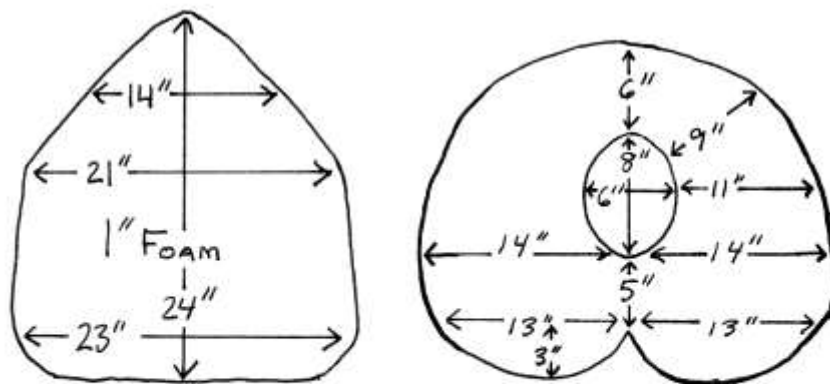
		
<p># 1. Beginning with a commercial Easter pageant costume pattern for a man's tunic, make a muslin mock-up of the tunic without the sleeves.</p>	<p># 2. Fit to the performer and note the alterations (if any) on the pattern.</p>	<p># 3. Make the hoop skirt according to the hoop skirt diagram, and check to make certain that the tunic fits over it. Alter the hem of the pattern if needed</p>



Make a small rigid hoop skirt of twill tape and a small hula hoop as shown. This prevents the testicles from crushing the bottom of the garment.



Cut out the front and back of the headpiece roughly as shown in 1" foam.



EXTRA REINFORCING
INNER FOAM BLOCK



EXTRA
FOAM TRIANGLES
TO STUFF POINT

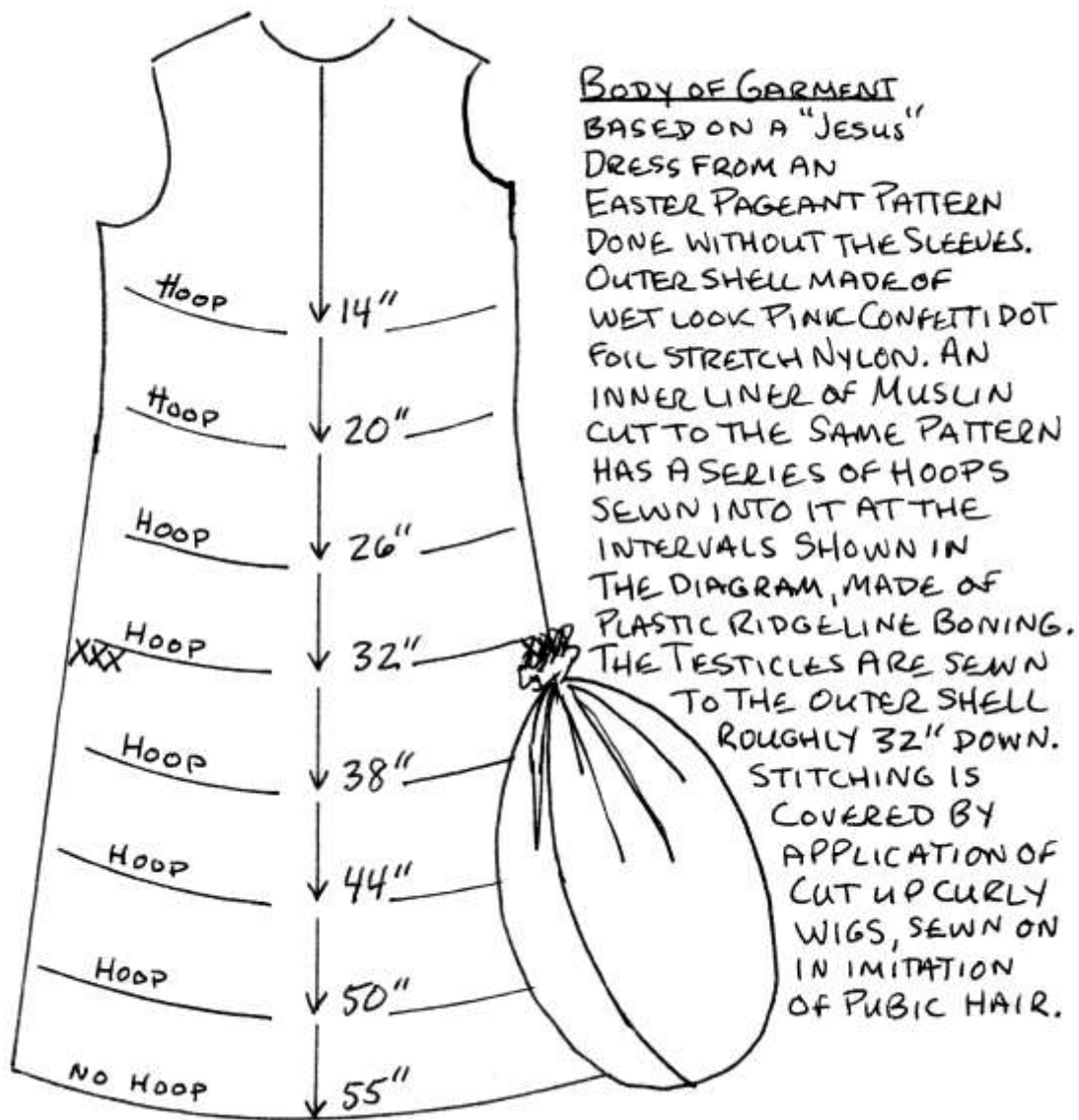
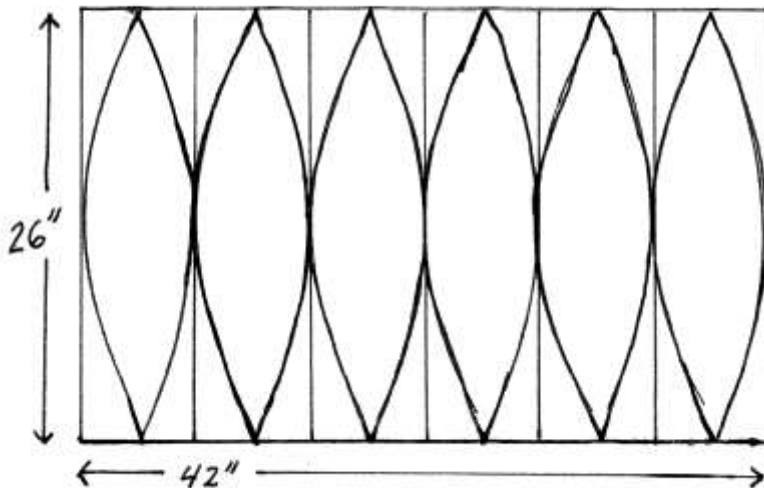
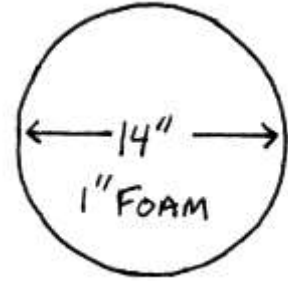


Diagram of boning and ball placement.



Cut two pieces of 1" foam into connected wedges approximately as shown to be made into the testicles.

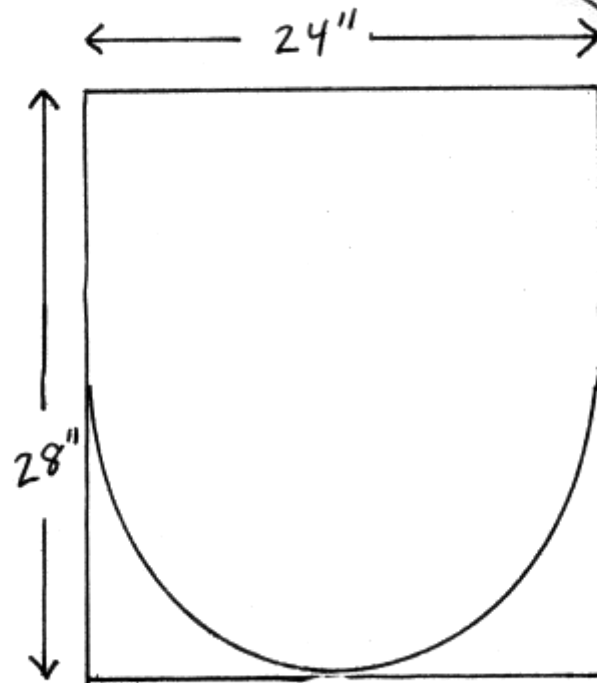
Cut two 1" foam disks 14" across or less to reinforce the shape of the testicles.



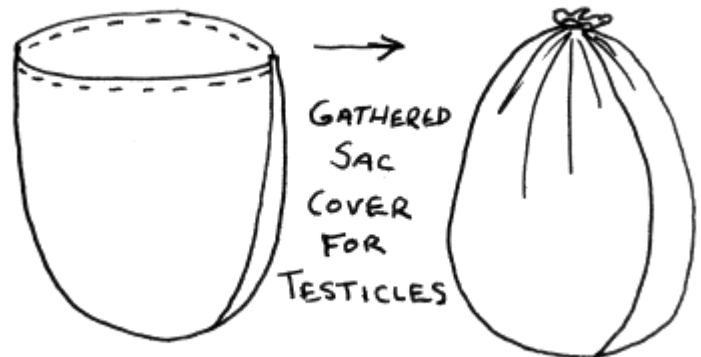
Place the foam disks in the center of the 2 sets of foam wedges, and glue the wedges around each disk. Add some crushed miracle cloth, above and below for stuffing, then glue the sides of the wedges together to form ovoid shapes.



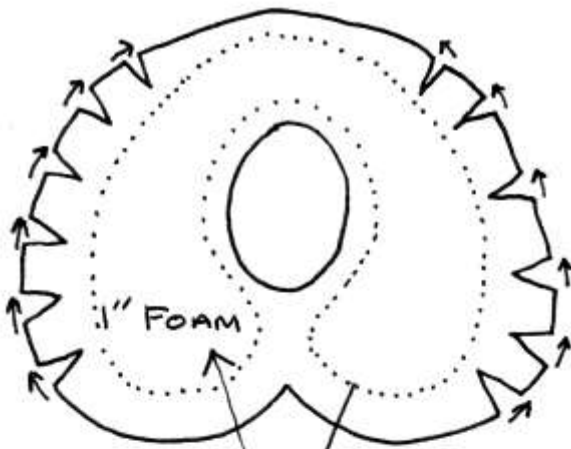
Cut four layers of the stretchy "skin" fabric to the pattern shown at right. Sew them into two sacs for covering the balls.



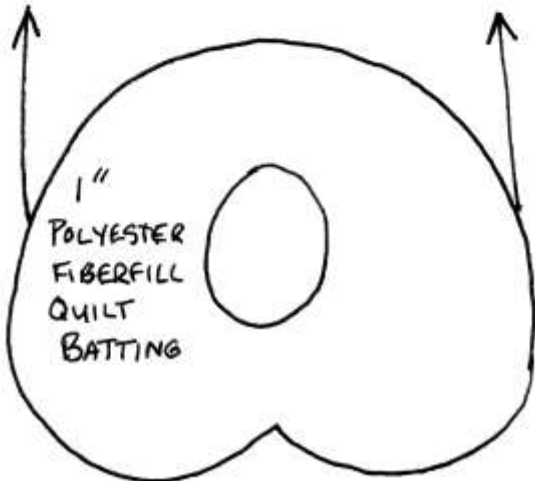
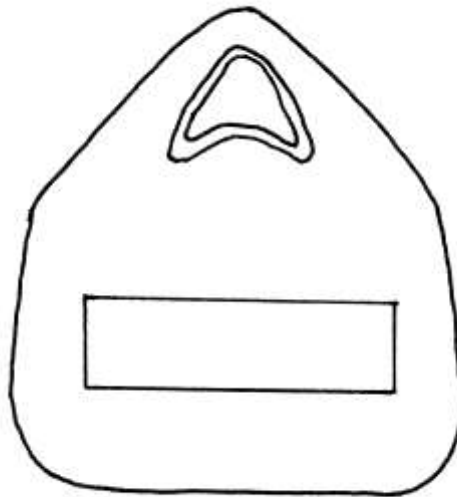
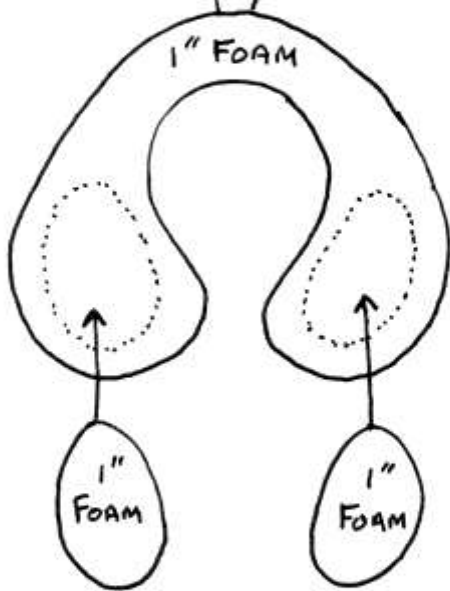
Take the sacs and wrap them around each testicle as shown. Stitch the gathered top of each together.



← Cut small wedges of foam out of the edges of the front piece to curve it and fit it to the back piece. Glue the front and back pieces of the headdress together. Cut smaller additional pieces of foam like those shown, to build up the front shape of the penis tip headdress. Apply in the configuration as shown, then smooth over the texture by trimming the edges of the foam, and putting on a layer of polyester quilt batting.



After putting together the front and back of the headdress, fit the headpiece on the performer. Glue in the tip reinforcement triangles and the back stiffening rectangle based on where the performer says they make the headpiece most comfortable and stable. Cover the whole headdress with a stretchy fabric skin by draping, pinning and finally gluing the fabric in place.



Bo Anderson as Dick and Margaret Bonnell as Jane from the Theatre UAF production of Lysistrata, 2002.



Detail of Dick's costume showing the air brushed fabric paint contouring.

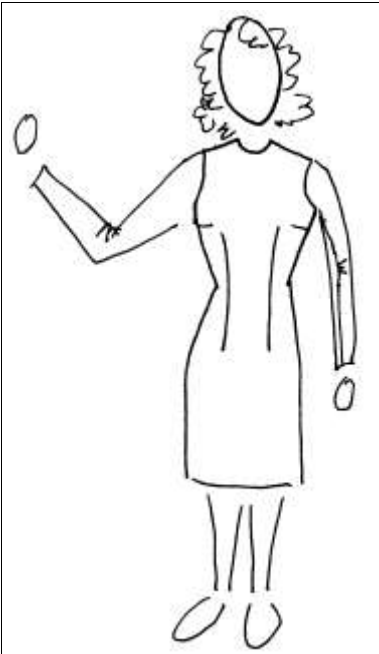


Margaret Bonnell as Jane from the Theatre UAF production of Lysistrata.

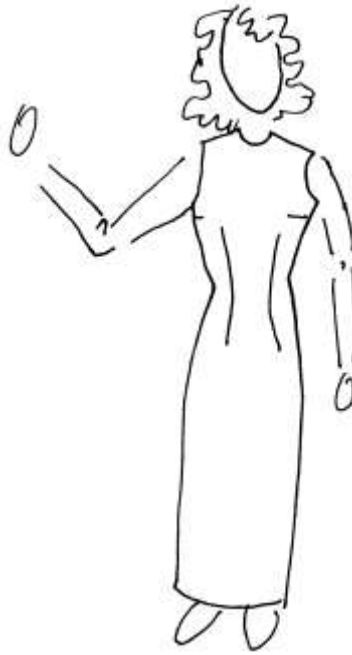


Detail of Jane's costume showing the air brushed fabric paint contouring.

Make Your Own Hand Painted Vagina



1. Making Jane: Start with a pattern for a basic sheath dress, not too tightly fitting.



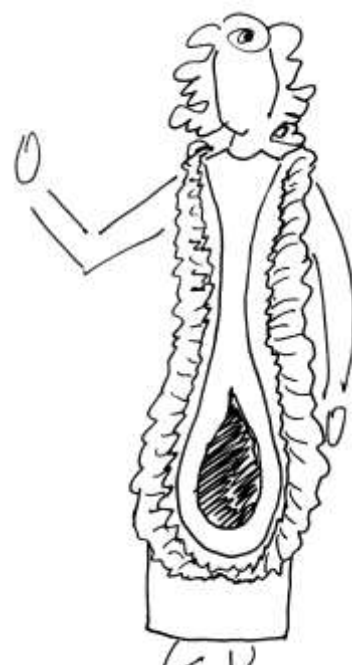
2. Sew a long version of the dress without sleeves in a sturdy pink fabric.



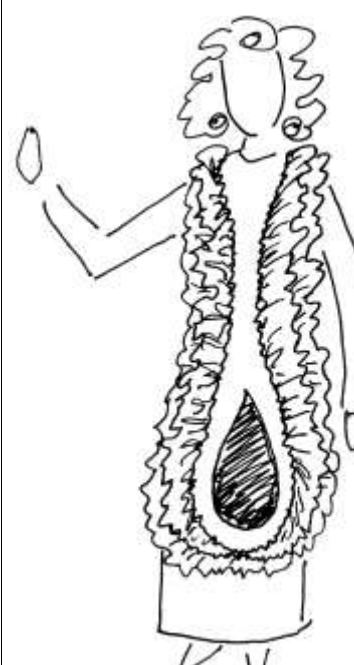
3. Sew on front appliqué in pink lamé or wet look fabric.



4. Cut away hole in center of appliqué. Sew in gathered lining "pocket" in deep red fabric. Bind edge in matching deep red.



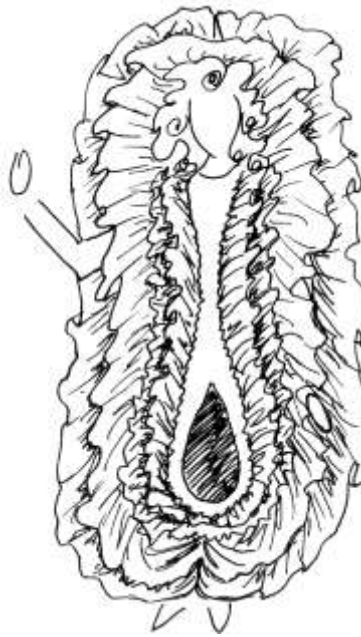
5. Cut, stuff and gather ruffle B out of pale pink taffeta. Attach about 2" outside edge of center appliqué.



6. Cut stuff and gather ruffle A out of pale pink taffeta. Attach it over the edge of the center appliqué.



7. Cut, stiffen, bone and gather ruffle C out of pale pink taffeta. Attach as per pattern diagram.



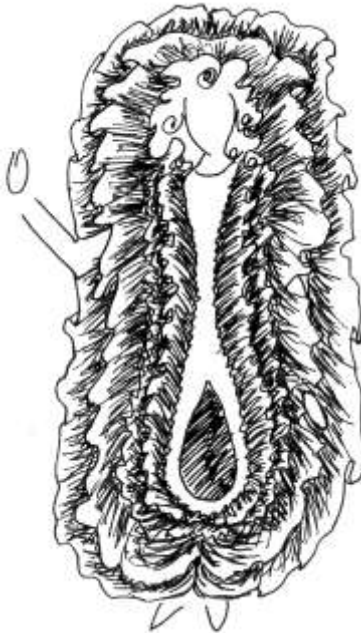
8. Cut, stiffen, bone and gather ruffle D out of pale pink taffeta. Attach as per pattern diagram.



9. Make uterus and ovaries appliqué and attach over zipper in back. Hand tack fallopian tubes and ovaries to the back of ruffle D. Tack ruffles C and D together at a few spots to help support the ruffles around the back of the neck.

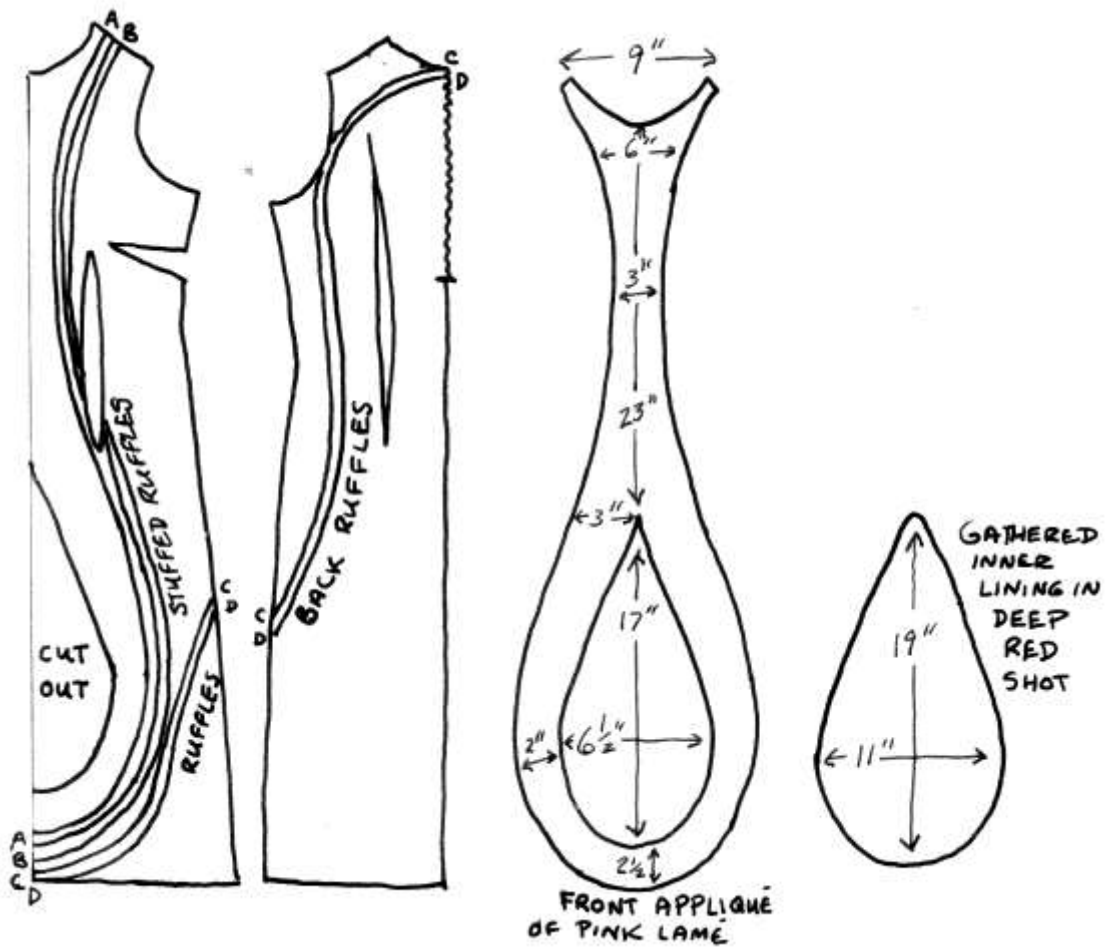


10. Airbrush or paint costume to add soft highlights and shadows.



Airbrush or paint costume to add soft highlights and shadows.

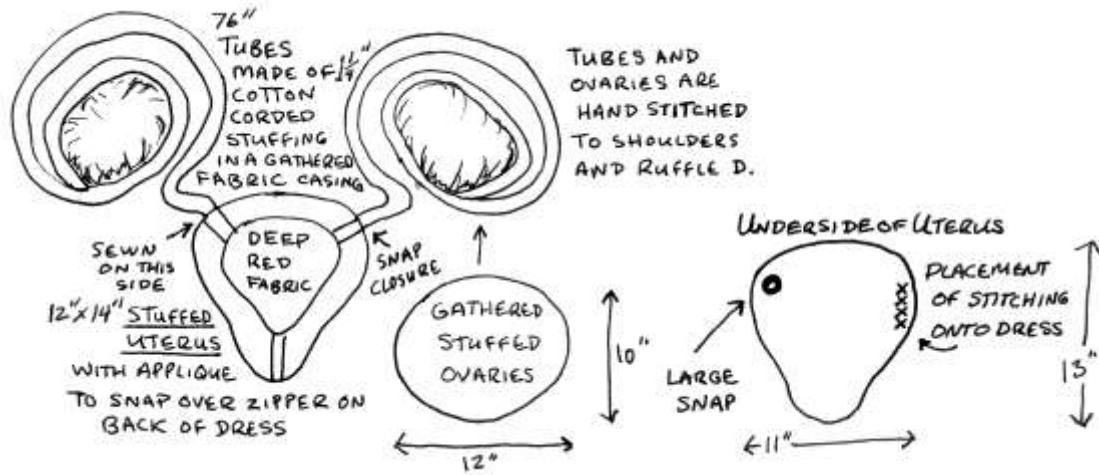
Patterns for this garment are shown on the following pages →



Ruffle and appliqué placement diagram (above)

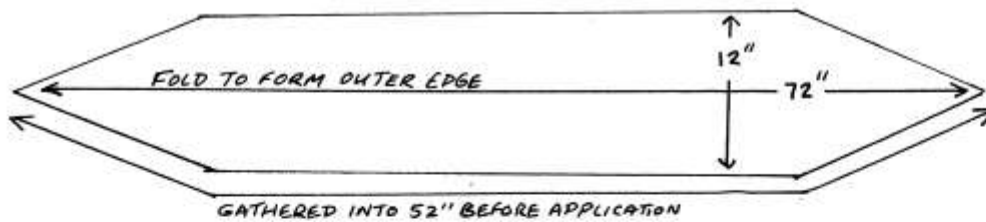
Cut pink lame appliqué and zig-zag it to the front of the dress as shown. Cut hole in dress in the center of the appliqué as indicated. Gather deep red liner into the hole, onto the inside edge, to form a pocket-like indent. Bind the edge with bias tape cut from the same dark red. Attach the stuffed ruffle B, just around 1" from the outer edge of the appliqué as indicated. Apply stuffed ruffle A over the edge of the appliqué to make a neat edge. Sew stiffened ruffles C and D to the back of the dress where indicated in the diagram. Tack the C and D ruffles together in a few spots to help hold them upright.



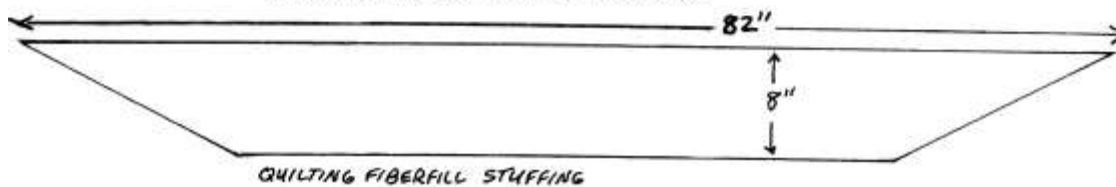
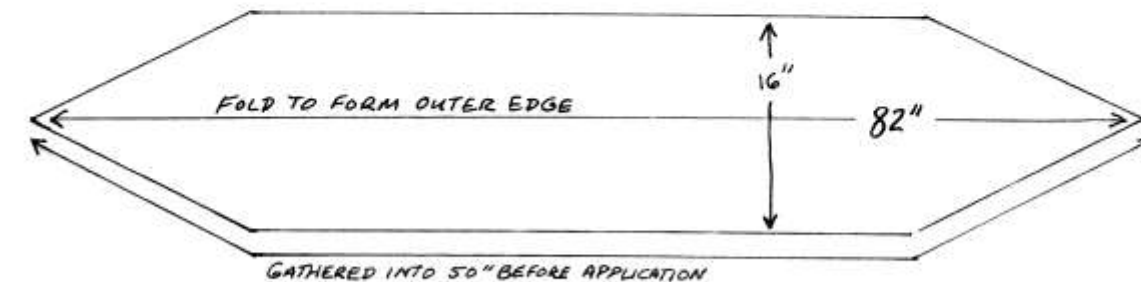


Uterus and ovaries appliqué pattern (above). Make this as a separate piece, and then hand-apply it across the back of the dress and Ruffle D as shown in the photo.

STUFFED RUFFLE "A" MADE OF PINK TAFFETA:



STUFFED RUFFLE "B" MADE OF PINK TAFFETA:



Pattern for stuffed ruffles A and B (above). Sew the stuffing inside the taffeta, then gather slightly and apply as shown in the placement diagram.

Pattern for stiffened ruffles C and D (at left).

